



The all-inclusive logistics puzzle:  
plastic containers and logistic  
applications for production, storage,  
distribution and point of sale.

<sup>®</sup>  
**LOGITLINE**

**weZ** *SUISSE*

# Put your eggs in the right basket

wez GROUP

## LogiLine: for perfect handling.

wez LogiLine products are made of extremely tough polypropylene plastic for long life and dependability. LogiLine containers in all shapes and sizes help to optimise logistics costs and efficiency in industry, trade and commerce worldwide. All wez LogiLine containers are **guaranteed for 5 years** against material flaws and faulty production.



Good products are well protected in wez LogiLine containers. Whether bulk solids or sensitive components, industrial products or foodstuffs of all kinds – LogiLine containers, crates, bottles and packets fit them all. In a wide range of sizes and versions, with practical handling accessories for production, transport, distribution or point of sale.



## LogiLine: to protect your products

Returnable plastic containers not only save money – they also make ecologically sense. Whatever the application, in the wez LogiLine range you will find the right container. Together with our well proven accessories for everyday handling, your products are well looked after right through manufacturing, storage and transport.



# LogiLine takes care of your prod



## LogiLine: ready for the future

Meeting with new requirements while retaining well proven concepts is a basic principle of the LogiLine concept. This includes strict compliance with our modular principle and consistently high product quality (certified to ISO 9001:2000). wez LogiLine keeps you abreast of times.



Logistics change rapidly these days. New production or distribution processes demand container systems with the utmost flexibility and compatibility. With wez LogiLine, only one container is often needed from production to point of sale – another reason for the growing popularity of this modular wez concept.



# Products from start to finish **wez** SUISSE



## **wez** SUISSE **LogiLine: customer-oriented**

Customer-orientation in thought and deed is indispensable for long-term success – as testified by ongoing improvements to products and packaging. wez LogiLine helps bring your products to the customer in perfect condition, for your success is our motivation.



# The comprehensive range for today



## **weZ** The overall wez solution

Partnership between customer and manufacturer is essential for practical and economical logistic solutions. And this is how the LogiLine range is continuously extended and adapted to market needs. Our extremely versatile range of containers for all sectors and applications is ideally complemented by a well-balanced range of accessories such as lids, container inserts, dividers, labelling systems, trolleys, stacking devices, etc.

### **Technical Directions**

All measurements, weights etc as shown in this publication are subject to the usual tolerances in accordance with WEZ standards, general engineering standards, and specific standards (such as DIN, ISO etc). Because of the many possibilities of applications for our products, possible or likely influences in the practical use of the products are beyond our control.

We, therefore, cannot generally be made responsible, or generally be hold liable, for the fulfillment of any specific job requirements.

Unless otherwise agreed with us and confirmed by us, all transactions are subject to our General Terms and Conditions.

Most items referred to in this publication make part of our stock line dealers of products. Please refer to our tariff or our dealers for specific availabilities of products, alternative specifications such as colours, and services.



# and the future



# LOGILINE®

## wez individuality

With a hot-printed logo your products show an individual look. The corporate design or trademark on your containers is an efficient publicity for your enterprise (see page 28). There are also many possibilities for labelling, or attaching documents (see page 27).



## Customised logistics solutions

We are constantly developing and implementing **customer and/or application-specific system solutions** from our top-quality standard products. Requirements are drawn up from ideas and specifications. Working from these, we devise the technical plan and can use 3D presentations to give an initial impression of the end-product. Often the next step is to create a 1:1 model of the planned product. Final conclusions on functionality and design can be drawn from this model. Once all details are finalized, the production mould is designed and manufactured using the available design data.

## Index

|   | Page  |
|---|-------|
| <b>Stackable Containers</b>                                   |       |
| Standard containers with SGL base . . . . .                   | 8     |
| Standard containers with flat base . . . . .                  | 10    |
| Standard containers with heavy-duty base . . .                | 11    |
| LogiLine containers in colours . . . . .                      | 12    |
| Standard containers of recycled material . . .                | 12    |
| LIGHT containers . . . . .                                    | 13    |
| VISTA storage bins . . . . .                                  | 13    |
| <b>Lids</b> . . . . .   | 14    |
| <b>Plastic crates for foodstuffs</b>                          |       |
| Plastic crates . . . . .                                      | 16-17 |
| Dairy product crates . . . . .                                | 18    |
| Plastic Crate 2000 . . . . .                                  | 19    |
| <b>Carrying cases</b>   |       |
| Carrying cases . . . . .                                      | 20    |
| LIGHT carrying cases . . . . .                                | 21    |
| Case accessories . . . . .                                    | 21    |
| <b>Container inserts</b>                                      |       |
| Insert containers . . . . .                                   | 22-23 |
| Divider systems . . . . .                                     | 24    |
| Boxes with lids, small containers . . . . .                   | 25    |
| <b>Accessories</b>  |       |
| Stacking and transport accessories . . . . .                  | 26    |
| Labelling systems . . . . .                                   | 27    |
| Individual logo positioning, printing and numbering . . . . . | 28    |
| <b>Products for special applications</b> . . . . .            | 29    |
| Waste and paper bins/buckets . . . . .                        | 30    |
| wez- Who we are . . . . .                                     | 31    |

# Standard containers with SGL base

wez-LogiLine containers comply with the European pallet norm 1200 x 800/1200 x 1000 mm, and can be stacked any way you want, mixed as well. Their mechanical properties and dimensional stability comply with Swiss SGL recommendations. Made of polypropylene copolymer PPC, they

also meet all FDA standards. Optimal useful capacity, conicity only 2 mm. They are extremely resistant to chemicals and acids, heat-resistant up to 130°C, washable, hygienic and long-lived. Maximum stacking load is very high at 800 kg. Standard colour is grey RAL 7001, batches of 500 and more can be supplied in any colour.



*wez-LogiLine containers 300 x 200 mm in 3 different heights, with shell grips and all-round base ribs.*



*wez-LogiLine containers 400 x 300 mm in 6 different heights, with shell grips or 2 handle holes. Standard SGL base design.*



*wez-LogiLine containers 600 x 400 mm in 7 different heights, with shell grips or 2/4 handle holes. Standard SGL base design.*

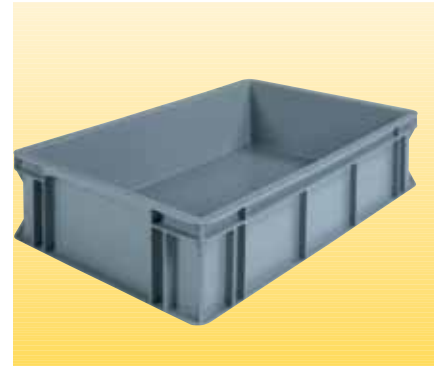




Standard version and design of container size 400 x 200 mm.



Standard version and design of container size 400 x 300 mm.



Standard version and design of container size 600 x 400 mm.



SGL model 6426.400 (600 x 400 x 266 mm) with 4 handle holes.



Standard handle holes ... .200. ...



Standard shell grip ... .000. ...

| Order No.    | Overall dim. mm | Stacking h. mm | Inside dim. mm  | Effect. h. mm | Capacity l | Weight g |
|--------------|-----------------|----------------|-----------------|---------------|------------|----------|
| 3204.000.971 | 300 x 200 x 053 | 44             | 260 x 160 x 041 | 31            | 1.7        | 250      |
| 3208.000.971 | 300 x 200 x 100 | 88             | 260 x 160 x 085 | 72            | 3.5        | 470      |
| 3213.000.971 | 300 x 200 x 145 | 133            | 260 x 160 x 130 | 117           | 5.4        | 610      |
| 4304.000.971 | 400 x 300 x 053 | 44             | 360 x 260 x 041 | 31            | 3.8        | 550      |
| 4308.000.971 | 400 x 300 x 100 | 88             | 360 x 260 x 085 | 72            | 8.0        | 795      |
| 4313.000.971 | 400 x 300 x 145 | 133            | 360 x 260 x 130 | 117           | 12.1       | 960      |
| 4313.200.971 | 400 x 300 x 145 | 133            | 360 x 260 x 130 | 117           | 12.1       | 950      |
| 4320.000.971 | 400 x 300 x 212 | 200            | 360 x 260 x 197 | 184           | 18.5       | 1335     |
| 4320.200.971 | 400 x 300 x 212 | 200            | 360 x 260 x 197 | 184           | 18.5       | 1325     |
| 4326.000.971 | 400 x 300 x 278 | 266            | 360 x 260 x 262 | 249           | 24.5       | 1660     |
| 4326.200.971 | 400 x 300 x 278 | 266            | 360 x 260 x 262 | 249           | 24.5       | 1660     |
| 4332.000.971 | 400 x 300 x 320 | 308            | 360 x 260 x 304 | 291           | 28.0       | 1880     |
| 4332.200.971 | 400 x 300 x 320 | 308            | 360 x 260 x 304 | 291           | 28.0       | 1880     |
| 6404.617.971 | 600 x 400 x 056 | 44             | 560 x 360 x 041 | 28            | 8.25       | 1060     |
| 6408.000.971 | 600 x 400 x 100 | 88             | 560 x 360 x 085 | 72            | 17.0       | 1450     |
| 6408.200.971 | 600 x 400 x 100 | 88             | 560 x 360 x 085 | 72            | 17.0       | 1450     |
| 6413.000.971 | 600 x 400 x 145 | 133            | 560 x 360 x 129 | 116           | 26.0       | 1870     |
| 6413.200.971 | 600 x 400 x 145 | 133            | 560 x 360 x 129 | 116           | 26.0       | 1870     |
| 6420.000.971 | 600 x 400 x 212 | 200            | 560 x 360 x 196 | 183           | 39.0       | 2320     |
| 6420.200.971 | 600 x 400 x 212 | 200            | 560 x 360 x 196 | 183           | 39.0       | 2320     |
| 6426.000.971 | 600 x 400 x 278 | 266            | 560 x 360 x 262 | 249           | 52.8       | 2700     |
| 6426.200.971 | 600 x 400 x 278 | 266            | 560 x 360 x 262 | 249           | 52.8       | 2700     |
| 6426.400.971 | 600 x 400 x 278 | 266            | 560 x 360 x 262 | 249           | 52.8       | 2820     |
| 6432.000.971 | 600 x 400 x 320 | 308            | 560 x 360 x 304 | 291           | 60.0       | 2825     |
| 6432.200.971 | 600 x 400 x 320 | 308            | 560 x 360 x 304 | 291           | 60.0       | 2825     |
| 6440.400.971 | 600 x 400 x 412 | 400            | 560 x 360 x 396 | 383           | 80.0       | 3960     |



# Standard containers with flat base

wez-LogiLine containers with flat base are ideal for smooth transport on roller conveyors and ball tables. They have the same features as containers with SGL base. Flat-base containers have an additional 10 mm useful height. They cannot be stacked on containers one size

smaller. Standard colour is grey RAL 7001, batches of 500 and more can be supplied in any colour.



| Order No.    | Overall dim. mm | Stacking h. mm | Inside dim. mm  | Effect. h. mm | Capacity l | Weight g |
|--------------|-----------------|----------------|-----------------|---------------|------------|----------|
| 2108.007.971 | 200 x 150 x 100 | 88             | 155 x 106 x 096 | 83            | 1.5        | 210      |
| 2113.007.971 | 200 x 150 x 145 | 133            | 155 x 106 x 142 | 129           | 2.7        | 282      |
| 3208.007.971 | 300 x 200 x 100 | 88             | 254 x 154 x 096 | 83            | 3.75       | 460      |
| 3213.007.971 | 300 x 200 x 145 | 133            | 254 x 154 x 141 | 128           | 5.5        | 585      |
| 4304.007.971 | 400 x 300 x 053 | 44             | 354 x 254 x 049 | 40            | 4.4        | 460      |
| 4308.007.971 | 400 x 300 x 100 | 88             | 354 x 254 x 096 | 83            | 8.7        | 840      |
| 4313.007.971 | 400 x 300 x 145 | 133            | 354 x 254 x 141 | 128           | 12.8       | 1005     |
| 4313.207.971 | 400 x 300 x 145 | 133            | 354 x 254 x 141 | 128           | 12.8       | 1000     |
| 4320.007.971 | 400 x 300 x 212 | 200            | 354 x 254 x 208 | 195           | 19.2       | 1380     |
| 4320.207.971 | 400 x 300 x 212 | 200            | 354 x 254 x 208 | 195           | 19.2       | 1380     |
| 4326.007.971 | 400 x 300 x 278 | 266            | 354 x 254 x 274 | 261           | 25.2       | 1705     |
| 4326.207.971 | 400 x 300 x 278 | 266            | 354 x 254 x 274 | 261           | 25.2       | 1705     |
| 4332.007.971 | 400 x 300 x 320 | 308            | 354 x 254 x 316 | 303           | 27.0       | 1880     |
| 4332.207.971 | 400 x 300 x 320 | 308            | 354 x 254 x 316 | 303           | 27.0       | 1880     |
| 6408.007.971 | 600 x 400 x 100 | 88             | 554 x 354 x 096 | 83            | 19.0       | 1400     |
| 6408.207.971 | 600 x 400 x 100 | 88             | 554 x 354 x 096 | 83            | 19.0       | 1400     |
| 6413.007.971 | 600 x 400 x 145 | 133            | 554 x 354 x 141 | 128           | 28.0       | 1820     |
| 6413.207.971 | 600 x 400 x 145 | 133            | 554 x 354 x 141 | 128           | 28.0       | 1820     |
| 6420.007.971 | 600 x 400 x 212 | 200            | 554 x 354 x 208 | 195           | 41.0       | 2240     |
| 6420.207.971 | 600 x 400 x 212 | 200            | 554 x 354 x 208 | 195           | 41.0       | 2240     |
| 6426.007.971 | 600 x 400 x 278 | 266            | 554 x 354 x 273 | 260           | 55.0       | 2650     |
| 6426.207.971 | 600 x 400 x 278 | 266            | 554 x 354 x 273 | 260           | 55.0       | 2650     |
| 6432.007.971 | 600 x 400 x 320 | 308            | 554 x 354 x 316 | 303           | 61.0       | 2740     |
| 6432.207.971 | 600 x 400 x 320 | 308            | 554 x 354 x 316 | 303           | 61.0       | 2740     |
| 6440.407.971 | 600 x 400 x 412 | 400            | 554 x 354 x 407 | 393           | 82.0       | 3900     |



# Standard containers with heavy-duty base



*Typical application in high bay warehouse: wellproven and secure*



wez LogiLine containers with heavy-duty base are ideal for transporting and storing heavy loads. Their typical honeycomb bottom design minimises base deformation (for high bay warehouses and conveyors). Various base versions for all needs in today's storage and conveying technology. Available with shell grips or handle holes. Standard colour grey RAL 7001, batches of 500 or more can be supplied in any colour.



*Reinforced base 15 mm, suitable for loads of approx. 35 kg (Code 613).  
Available size: 600 x 400 mm  
Container heights: 133 / 266 mm*



*Reinforced base 12 mm, suitable for loads of approx. 35 kg (Code 204).  
Available size: 400 x 300 mm  
Container heights: 133 / 200 / 266 mm*



*Reinforced base 17 mm, suitable for loads of approx. 50 kg (Code 607).  
Bottom ribs with central gap for mixed stacking.  
Available size: 600 x 400 mm, Container heights: 133 / 266 mm*



*Reinforced base 15 mm or 18.5 mm, suitable for loads of approx. 60 kg  
(Code 626 for 15 mm, Code 611 for 18.5 mm).  
Available size: 600 x 400 mm, Container heights: 133 / 200 / 266 / 400 mm*

# LogiLine containers in colours

wez standard containers in red (RAL 3020) and blue (RAL 5002) available from stock.

Other colours and sizes on request  
(please pay attention to our minimum quantities!)



| Order No.     | Overall dim. mm | Stacking h. mm                    | Inside h. mm    | Effect. h. mm | Capacity l | Colours                                 |  |
|---------------|-----------------|-----------------------------------|-----------------|---------------|------------|---|--|
| 4313.000. ... | 400 x 300 x 145 | 133                               | 360 x 260 x 130 | 117           | 12.1       | available in<br>red = 907<br>blue = 905 |  |
| 4320.000. ... | 400 x 300 x 212 | 200                               | 360 x 260 x 197 | 184           | 18.5       |   |  |
| 4326.000. ... | 400 x 300 x 278 | 266                               | 360 x 260 x 262 | 249           | 24.5       |   |  |
| 6413.000. ... | 600 x 400 x 145 | 133                               | 560 x 360 x 129 | 116           | 26.0       |   |  |
| 6420.000. ... | 600 x 400 x 212 | 200                               | 560 x 360 x 196 | 183           | 39.0       |   |  |
| 6426.200. ... | 600 x 400 x 278 | 266                               | 560 x 360 x 262 | 249           | 52.8       |   |  |
| 4300.032. ... | 400 x 300       | Hinged lid with two swing latches |                 |               |            |   |  |
| 6400.032. ... | 600 x 400       |                                   |                 |               |            |   |  |



# Standard containers made of recycled material

These low-cost wez LogiLine containers are made of 100% granulate from old or defective PP containers and waste PP material – a worthwhile alternative. Standard version with handle holes and SGL base. Standard colour: dark green (with deviations).  
Not suitable for direct contact with foodstuffs.



| Order No.    | Overall dim. mm | Stacking height mm | Inside dim. mm  | Capacity l |
|--------------|-----------------|--------------------|-----------------|------------|
| 4313.200.069 | 400 x 300 x 145 | 133                | 360 x 260 x 130 | 12.1       |
| 4326.200.069 | 400 x 300 x 278 | 266                | 360 x 260 x 262 | 24.5       |
| 6413.200.069 | 600 x 400 x 145 | 133                | 560 x 360 x 129 | 26.0       |
| 6426.200.069 | 600 x 400 x 278 | 266                | 560 x 360 x 262 | 52.8       |
| 6440.400.069 | 600 x 400 x 412 | 400                | 560 x 360 x 396 | 80.0       |



# LIGHT containers

Very attractive containers in performance and price! 35% weight reduction compared to the standard containers. The perfect box for using at home, for hobbies and for all light-weight goods.

With flat bottom, available in two sizes. For suitable lids see pages 14/15. Also available in carrying case version, see pages 20/21.



| Order No.    | Overall dim. mm | Inside dim. mm  | Weight g | Colours                               |
|--------------|-----------------|-----------------|----------|---------------------------------------|
| 4313.097.9XX | 400 x 300 x 145 | 354 x 254 x 141 | 650      | Diverse colours available on request. |
| 6413.097.9XX | 600 x 400 x 145 | 554 x 354 x 141 | 1120     |                                       |



# VISTA storage bins

wez LogiLine VISTA bins for keeping a good overview of your stock. Compatible storage bins in 3 sizes with the following outstanding features:

- Large top opening, closable with transparent front cover
- Euronorm and SGL-compatible
- Strong suspension takes up to 25 kg

- Reinforced ribbed base for heavy weights and smooth running on roller conveyors
  - Label holder or writable label 25 x 80 mm
- Made of PPC, colour grey RAL 7001, batches of 500 and more can be supplied in any colour.



| Order No.    | Designation         | Overall dim. mm | Inside dim. mm  | Colour/version |
|--------------|---------------------|-----------------|-----------------|----------------|
| 2113.550.971 | VISTA storage bin   | 200 x 150 x 145 | 155 x 135 x 130 | grey           |
| 3213.550.971 | VISTA storage bin   | 300 x 200 x 145 | 255 x 180 x 130 | grey           |
| 4313.550.971 | VISTA storage bin   | 400 x 300 x 145 | 355 x 260 x 130 | grey           |
| 9980.059.000 | Front cover F 32/21 | 120 x 065       |                 | transparent    |
| 9980.060.000 | Front cover F 43    | 180 x 065       |                 | transparent    |
| 9980.073.000 | VISTA labels per %  | 025 x 080       |                 |                |



# Lids

Lids for wez LogiLine containers in 3 sizes, suitable for all standard containers. For protection against dust, rain and unauthorised opening. Stackable also with lid mounted. Made of PPC, colour grey

RAL 7001, also available in recycling material, green, batches of 500 and more can be supplied in any colour.



*Loose-fitting lid without fastener. 3 sizes.  
Code: 000*



*Lid with 4 swing latches, for secure fastening to container. 3 sizes. Swing latch colour blue or black.  
Code: 044*



*Hinged lid with 2 swing latches. Hinges clipped onto container edge (easily removed with lid open), 3 sizes. Hinge/swing latch colour blue or black.  
Code: 032*



*2-part lid hinge, blue or black.*



*Swing latch (pair) in blue or black. Easily retro-fittable to lid version 000.*



*Swing latch seal against unauthorised opening. Guarantees 100% originality protection.*

# Lids



*Hinged lid with interior A4 document compartment. Ideal for operating manuals, product brochures, etc.  
2 sizes: 400 x 300 mm, 600 x 400 mm*



*Transparent loose lid in 3 sizes (300 x 200/400 x 300/600 x 400 mm).  
Dust- and rainproof. Contents visible. Easily stackable.*



| Order No.    | Size mm   | Article/version                               | Colour              |
|--------------|-----------|---|---------------------|
| 3200.000.971 | 300 x 200 | Loose cover without swing latches or hinges   | grey                |
| 4300.000.971 | 400 x 300 |   | grey                |
| 6400.000.971 | 600 x 400 |   | grey                |
| 3200.032.950 | 300 x 200 | Hinged lid with 2 swing latches               | grey/blue           |
| 4300.032.950 | 400 x 300 |   | grey/blue           |
| 4300.032.905 | 400 x 300 |   | blue RAL 5002/black |
| 4300.032.907 | 400 x 300 |   | redRAL 3020/black   |
| 6400.032.950 | 600 x 400 |   | grey/blue           |
| 6400.032.905 | 600 x 400 | Lid with 4 swing latches                      | blue RAL 5002/black |
| 6400.032.907 | 600 x 400 |   | redRAL 3020/black   |
| 3200.044.950 | 300 x 200 |   | grey/blue           |
| 4300.044.950 | 400 x 300 | Hinged lid with interior document compartment | grey/blue           |
| 6400.044.950 | 600 x 400 |   | grey/blue           |
| 4300.932.950 | 400 x 300 | Recessed loose lid                            | grey/blue           |
| 6400.932.950 | 600 x 400 |   | transparent         |
| 9980.091.000 | 600 x 400 | Lid hinge                                     | transparent         |
| 9980.106.000 | 400 x 300 |   | transparent         |
| 9980.182.000 | 300 x 200 |   | transparent         |
| 9980.011.    |           | Pair of swing latches                         | blue or black       |
| 9980.012.    |           |   | blue or black       |
| 9980.141.000 |           | Lid seal                                      | transparent         |

# Plastic crates

for food handling and distribution

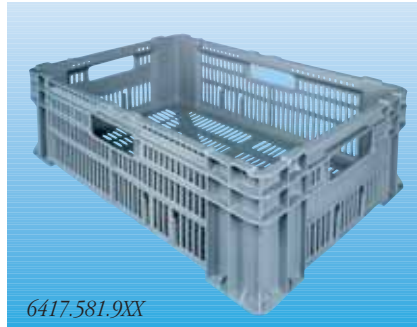


- Lightweight
- Well ventilated
- Strong and long-lived
- Hygienic and easily washed
- Food-compatible
- Easily and securely stacked



6417.582.962

Vegetable crate G2. Can be counterstacked. Integrated label holders on all 4 sides. Optimal capacity. Made of PPC, colour green. Flat base area for optimal product protection.



6417.581.9XX

Standard crate with optimal ventilation. 4 handle bores. Integrated label holders on all 4 sides. Easily stacked. Flat base area for optimal product protection. Made of PPC.



6430.580.9XX

Practical lightweight universal crate with wavy inside walls for ideal product protection. Optimal ventilation.



6440.420.971

Standard crate in heavy-duty version, easily stacked, according to SGL-recommendations.



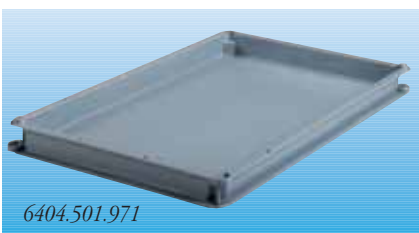
6426.420.971

Standard crate in heavy-duty-version, easily stacked, according to SGL-recommendations.



6408.634.971

Standard crate with closed base.



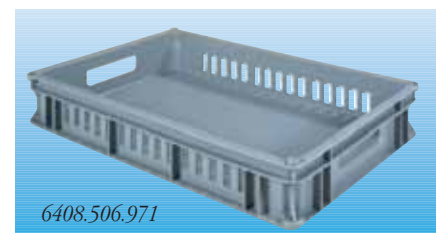
6404.501.971

Meat and confectionary container. Stackable, can be counterstacked, i.e. can also be used as lid without affecting stacking.



6404.503.971

Meat and confectionary container. Stackable, can be counterstacked, i.e. can also be used as lid without affecting stacking.



6408.506.971

Meat and confectionary container. Stackable, can be counterstacked, i.e. can also be used as lid without affecting stacking.

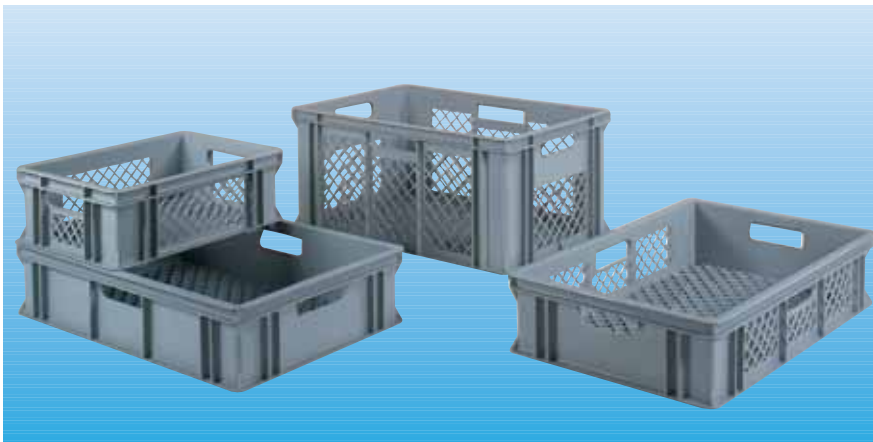
| Order No.    | Overall dim. mm | Stacking h. mm | Inside dim. mm  | Version /designation      | Colour                              |
|--------------|-----------------|----------------|-----------------|---------------------------|-------------------------------------|
| 6417.582.962 | 600 x 400 x 187 | 175            | 564 x 364 x 172 | G2 vegetable crate        | green                               |
| 6417.581.9XX | 600 x 400 x 187 | 175            | 564 x 364 x 172 | Standard crate            | 971 = grey/911 = yellow             |
| 6430.580.9XX | 600 x 400 x 317 | 305            | 560 x 360 x 300 | Slotted walls + base      | 911 = yellow/963 = green/971 = grey |
| 6440.420.971 | 600 x 400 x 412 | 400            | 560 x 360 x 396 | Slotted walls/closed base | grey                                |
| 6426.420.971 | 600 x 400 x 278 | 266            | 560 x 360 x 262 | Slotted walls/closed base | grey                                |
| 6408.634.971 | 600 x 400 x 100 | 88             | 560 x 360 x 085 | Slotted long. walls       | grey                                |
| 6404.501.971 | 600 x 400 x 053 | 44             | 560 x 360 x 040 | Closed                    | grey                                |
| 6404.503.971 | 600 x 400 x 053 | 44             | 560 x 360 x 040 | L.walls/base perforated   | grey                                |
| 6408.506.971 | 600 x 400 x 100 | 88             | 560 x 360 x 084 | L.walls slotted/2 handles | grey                                |





# Plastic crates

for food handling and distribution



Standard crates with optimal ventilation.  
High quality according  
to SGL-recommendations.  
3 sizes, various executions.

| Order No.        | Overall dim. mm | Stacking h. mm | Inside dim. mm  | Version/designation        | Colour                  |
|------------------|-----------------|----------------|-----------------|----------------------------|-------------------------|
| 4313.250.971     | 400 x 300 x 145 | 133            | 360 x 260 x 130 | Walls + base perforated    | grey                    |
| 6413.451.911/971 | 600 x 400 x 145 | 133            | 560 x 360 x 130 | L. walls + base perforated | 911 = yellow/971 = grey |
| 6426.450.971     | 600 x 400 x 278 | 266            | 560 x 360 x 262 | Walls + base perforated    | 971 = grey              |
| 6426.452.971     | 600 x 400 x 278 | 266            | 560 x 360 x 262 | Base perforated            | 971 = grey              |



# Bakery crates

Crates for the Swiss Association of Bakeries, for  
bread and confectionary.

With the official Swiss bakery logo.  
Individual logo also possible. 4 sizes.  
Made of PPC, light brown.



| Order No.    | Overall dim. mm | Stacking height mm | Inside dim. mm  |
|--------------|-----------------|--------------------|-----------------|
| 6408.644.980 | 600 x 400 x 100 | 88                 | 560 x 360 x 085 |
| 6413.644.980 | 600 x 400 x 145 | 133                | 560 x 360 x 130 |
| 6426.644.980 | 600 x 400 x 278 | 266                | 560 x 360 x 262 |
| 6440.644.980 | 600 x 400 x 412 | 400                | 560 x 360 x 396 |



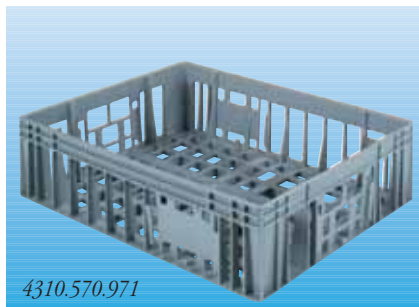
# Dairy product crates

Crates for dairy products usable in production, storage, distribution and product presentation at POS. All crates are compatible with wez LogiLine containers and all Euro standard boxes.



4326.572.971

*Crate for 15 x 1 litre Tetra-TOP.  
Integrated label holder; reinforced closed base.  
Suitable for mechanical handling.*



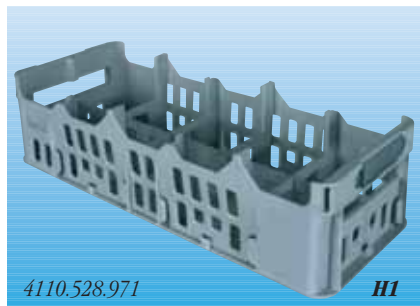
4310.570.971

*Yoghurt/quark/dessert crate without dividers.  
Max. useful height 82 mm.*



4310.588.971

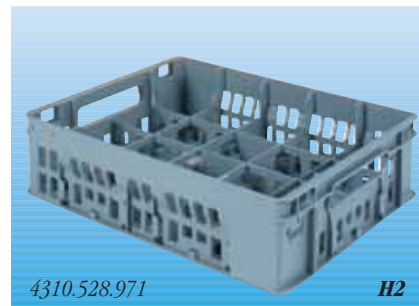
*Yoghurt crate with integrated dividers for 20 beakers  
of 180/200 g.  
Max. useful height 82 mm.*



4110.528.971

**H1**

*10-beaker yoghurt crate.  
Max. beaker diameter 73 mm, max. height 83 mm.*



4310.528.971

**H2**

*20-beaker yoghurt crate.  
Max. beaker diameter 73 mm, max. height 83 mm.*

| Order No.    | Overall dim. mm | Stacking h. mm | Version /designation             | Colour |
|--------------|-----------------|----------------|----------------------------------|--------|
| 4326.572.971 | 400 x 300 x 278 | 266            | for 15 x 1 litre Tetra-TOP       | grey   |
| 4310.570.971 | 400 x 300 x 112 | 100            | for 20 beakers, without dividers | grey   |
| 4310.588.971 | 400 x 300 x 112 | 100            | for 20 beakers                   | grey   |
| 4110.528.971 | 400 x 150 x 112 | 100            | for 10 beakers                   | grey   |
| 4310.528.971 | 400 x 300 x 112 | 100            | for 20 beakers                   | grey   |

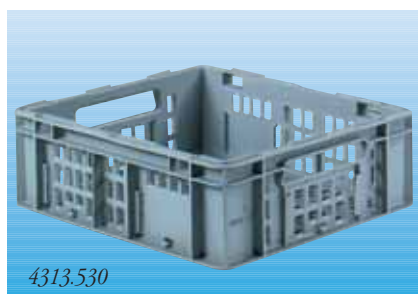
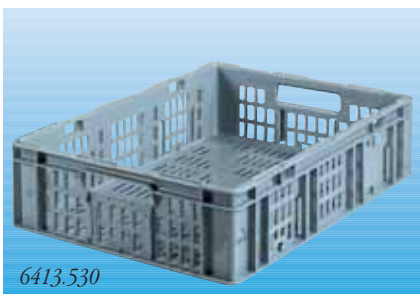
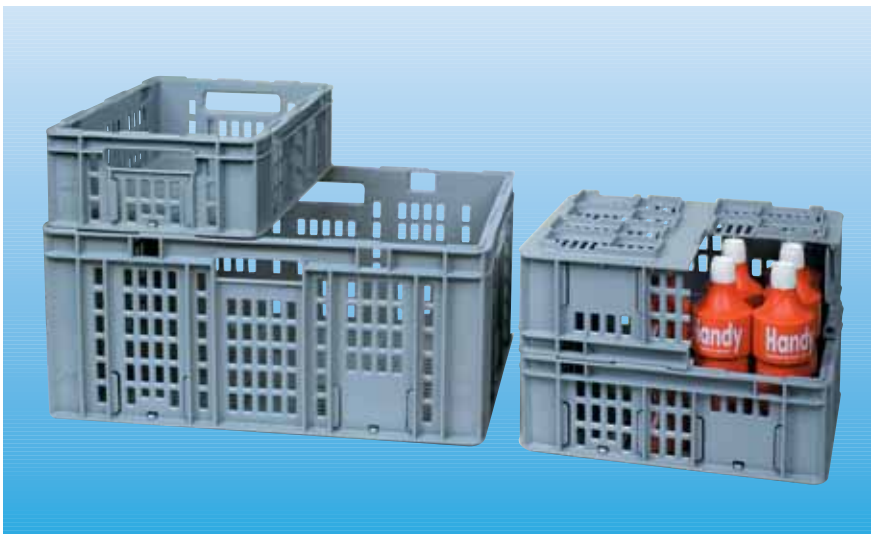


# Plastic Crate 2000

The Crate 2000 range: for efficient goods distribution in the food and non-food sectors. Universal crates meet all modern logistics requirements as well as optimal goods presentation needs. These SGL-approved crates have the following outstanding features:

- Integrated label holders on all 4 sides for fast automated labelling without glue
- Mechanical handling hole opening
- Universal crates can be stacked top to top or base to base

- Moulded-in bar code with data on crate type, owner, year of production, manufacturer and material
- Slotted walls and base for good ventilation of cooled products
- Made of PPC, colour grey RAL 7001, batches of 500 and more can be supplied in any colour.



| Order No.    | Overall dim. mm | Stacking h. mm | Inside dim. mm  | Weight g | Colour |
|--------------|-----------------|----------------|-----------------|----------|--------|
| 4313.530.971 | 400 x 300 x 145 | 133            | 360 x 260 x 130 | 1000     | grey   |
| 6413.530.971 | 600 x 400 x 145 | 133            | 560 x 360 x 130 | 1850     | grey   |
| 6426.530.971 | 600 x 400 x 278 | 266            | 560 x 360 x 262 | 2870     | grey   |



# Carrying cases

wez LogiLine carrying cases are ideal for product packaging and presentation, service and repairs, hobbies, school, etc. Standard version with flat base, comfortable handle and hinged lid. Very wide range in standard sizes 300 x 200/400 x 300/600 x 400 mm and various heights.

Made of PPC, colour grey RAL 7001, batches of 500 and more can be supplied in any colour. Handle, hinges and locks blue. Other versions and handle locations to order.



| Order No.    | Overall dim. mm | Eff. inside dim. mm | Colour |
|--------------|-----------------|---------------------|--------|
| 3208.397.950 | 300 x 200 x 110 | 260 x 160 x 095     | grey   |
| 4304.397.950 | 400 x 300 x 063 | 354 x 254 x 048     | grey   |
| 4308.397.950 | 400 x 300 x 110 | 354 x 254 x 095     | grey   |
| 4313.397.950 | 400 x 300 x 154 | 354 x 254 x 139     | grey   |
| 4320.397.950 | 400 x 300 x 221 | 354 x 254 x 206     | grey   |
| 4326.397.950 | 400 x 300 x 287 | 354 x 254 x 272     | grey   |
| 6408.397.950 | 600 x 400 x 111 | 554 x 354 x 095     | grey   |
| 6413.397.950 | 600 x 400 x 155 | 554 x 354 x 139     | grey   |
| 6420.397.950 | 600 x 400 x 221 | 554 x 354 x 206     | grey   |
| 6426.397.950 | 600 x 400 x 288 | 554 x 354 x 272     | grey   |

Further executions and sizes on request!



Swing latch seal to prevent unauthorised opening. Guarantees 100% originality protection.  
Order No. 9980.141.000



Case with reinforced lid and lock to protect your valuable products from unauthorised access.  
Various sizes to order.



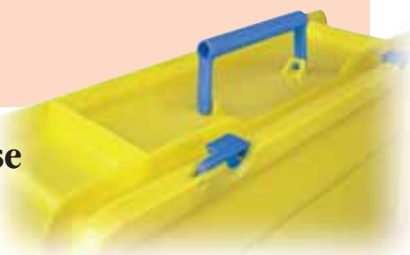
# LIGHT carrying cases



## Multi-purpose case LIGHT version

- trendy
- useful
- sturdy and handy

A 30% weightsaving together with the well-known wez quality offer you an attractive product with an interesting price-performance relation.



| Order No.       | Overall dim. mm | Inside dim. mm  | Colours                               |
|-----------------|-----------------|-----------------|---------------------------------------|
| 60.4313.387.9XX | 400 x 300 x 154 | 354 x 254 x 139 | Diverse colours available on request. |

# Case accessories



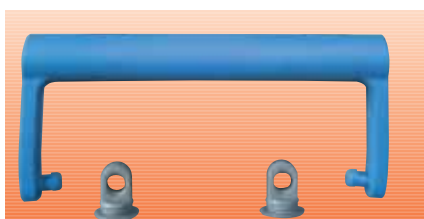
Upholstered foam insert for lid sizes 600 x 400 and 400 x 300 mm, 30 mm high.  
Soft quality, grey.



Foam inserts for lids.  
Sizes 600 x 400, 400 x 300 mm, 2 heights  
Soft quality, grey.



Pre-perforated foam-block for customised shaping to suit your product.  
85 mm high, 2 sizes, suitable for 400 x 300 and 600 x 400 mm.  
Soft quality, dark grey.

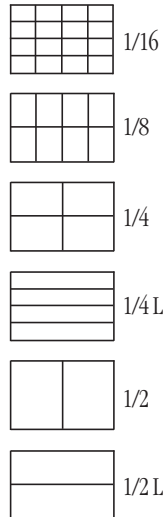


Case grip for customised mounting. Blue or black.  
Suitable holder in grey or black.

| Order No.    | Designation                 | Size mm         | Version/Colour               |
|--------------|-----------------------------|-----------------|------------------------------|
| 2535.030.0XX | upholstered foam (1:1)      | 352 x 252 x 030 | 010 = loose / 011 = glued in |
| 3555.030.0XX |                             | 352 x 552 x 030 | 010 = loose / 011 = glued in |
| 2535.010.0XX | Foam insert, flat           | 352 x 252 x 010 | 000 = loose / 001 = glued in |
| 2535.020.0XX |                             | 352 x 252 x 020 | 000 = loose / 001 = glued in |
| 3555.010.0XX |                             | 352 x 552 x 010 | 000 = loose / 001 = glued in |
| 3555.020.0XX |                             | 352 x 252 x 020 | 000 = loose / 001 = glued in |
| 2636.085.000 | Pre-perforated foam block   | 258 x 358 x 085 |                              |
| 3656.085.000 |                             | 358 x 558 x 085 |                              |
| 9980.128.000 | Handle 95, loose            |                 | 60 = blue / 63 = black       |
| 9980.129.000 | Handle holder 95, loose     |                 | 60 = blue / 63 = black       |
| 9980.828.000 | Handle 95 complete, mounted |                 | 60 = blue / 63 = black       |

# Insert containers

Flexible dividing systems for LogiLine containers offer various possibilities.

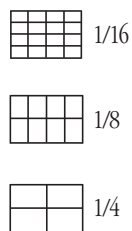


## VARIOBOX 110

Inserts for container 600 x 400 mm.  
All round easy-access interior radius. 2 grip bars, standard height 110 mm. Suitable label holder.  
Available in 6 sizes, stackable.  
Colour: grey



| Order No.    | Designation    | Overall dim. mm | Inside dim. mm  |
|--------------|----------------|-----------------|-----------------|
| 1308.110.971 | Variobox 1/16  | 137 x 087 x 110 | 132 x 082 x 105 |
| 1713.110.971 | Variobox 1/8   | 174 x 137 x 110 | 168 x 131 x 105 |
| 2717.110.971 | Variobox 1/4   | 274 x 174 x 110 | 268 x 168 x 105 |
| 5508.110.971 | Variobox 1/4 L | 550 x 087 x 110 | 544 x 081 x 105 |
| 3527.110.971 | Variobox 1/2   | 350 x 274 x 110 | 344 x 268 x 105 |
| 5517.110.971 | Variobox 1/2 L | 550 x 174 x 110 | 544 x 168 x 105 |
| 9980.048.000 | Label holder   | 104 x 074       |                 |



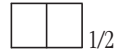
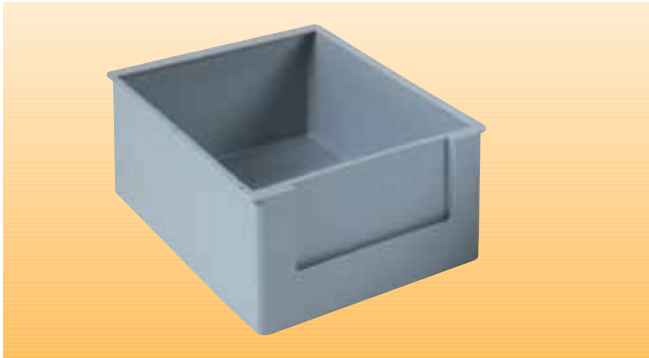
## VARIOBOX 55

Inserts for container 400 x 300 mm.  
Easy-access interior radius on the front side.  
Grip bar with integrated label holder on the backside.  
Available in 3 sizes, grey.  
Standard height 55 mm.  
Colour: grey



| Order No.    | Designation   | Overall dim. mm | Inside dim. mm  |
|--------------|---------------|-----------------|-----------------|
| 0609.055.371 | Variobox 1/16 | 064 x 089 x 055 | 060 x 084 x 052 |
| 1309.055.371 | Variobox 1/8  | 128 x 089 x 055 | 124 x 084 x 052 |
| 1318.055.371 | Variobox 1/4  | 128 x 178 x 055 | 124 x 173 x 052 |
| 9980.151.000 | Label         | 055 x 9.5       |                 |

# Insert containers



## Insert container ZAG

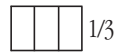
Insert for container 400 x 300 mm.

Stackable container insert with integrated label holder on one small side.

Colour: grey



| Order No.    | Size | Overall dim. mm | Inside dim. mm   |
|--------------|------|-----------------|------------------|
| 2517.095.971 | 1/2  | 250 x 175 x 095 | 242 x 158 x 87.5 |



## Insert container, nestable

Insert for container 400 x 300 mm.

Colour: grey

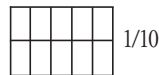


Insert for container 300 x 200 mm.

Colour: grey



| Order No.    | Designation                | Overall dim. mm | Inside dim. mm  |
|--------------|----------------------------|-----------------|-----------------|
| 2612.070.971 | Insert container, nestable | 260 x 120 x 070 | 232 x 093 x 067 |
| 1608.070.971 | Insert container, nestable | 160 x 087 x 070 | 132 x 060 x 067 |



## Insert container US

Insert for container 600 x 400 mm.

Stackable.

Container insert can be divided with additional 1–3 dividers.

Suitable snap-on lid.

Colour: grey.



| Order No.    | Designation                | Overall dim. mm | Inside dim. mm  |
|--------------|----------------------------|-----------------|-----------------|
| 1711.055.971 | Insert container, nestable | 179 x 112 x 055 | 173 x 106 x 052 |
| 1711.011.971 | Lid                        | 179 x 112       |                 |
| 1042.002.971 | partition                  | 109 x 042       |                 |

# Divider systems

Insertable divider systems offering individual container divisions. Made of PP, grey.



Divider 3610 and 5610, height 100 mm, smallest division 36 x 40 mm, suits containers 600 x 400 mm.



Divider 3620 and 5620, height 200 mm, smallest division 71 x 80 mm, suits containers 600 x 400 mm.



Divider 2610 and 3610, height 100 mm, smallest division 30 x 36 mm, suits containers 400 x 300 mm.

| Order No.    | Dimension mm | Smallest division mm* | Colour |
|--------------|--------------|-----------------------|--------|
| 2610.003.971 | 258 x 100    | 30                    | grey   |
| 3610.003.971 | 358 x 100    | 36                    | grey   |
| 5610.003.971 | 558 x 100    | 40                    | grey   |
| 3620.003.971 | 358 x 200    | 71                    | grey   |
| 5620.003.971 | 558 x 200    | 80                    | grey   |

\* To calculate the usable dimensions please subtract 7 mm from the dimensions specified above.

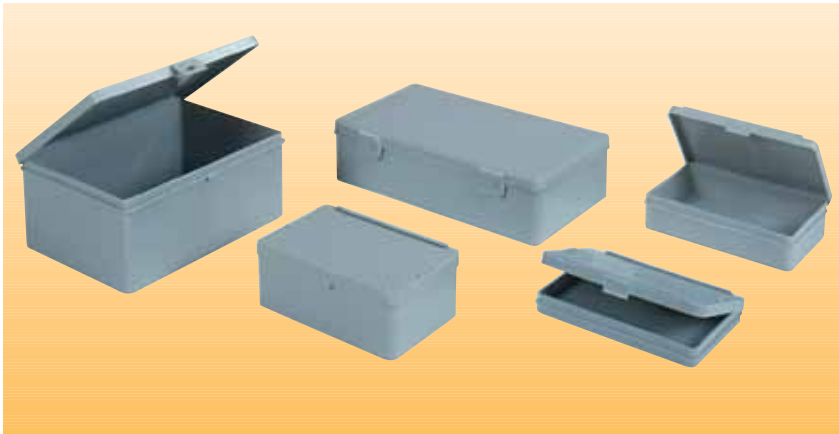
# Transport security



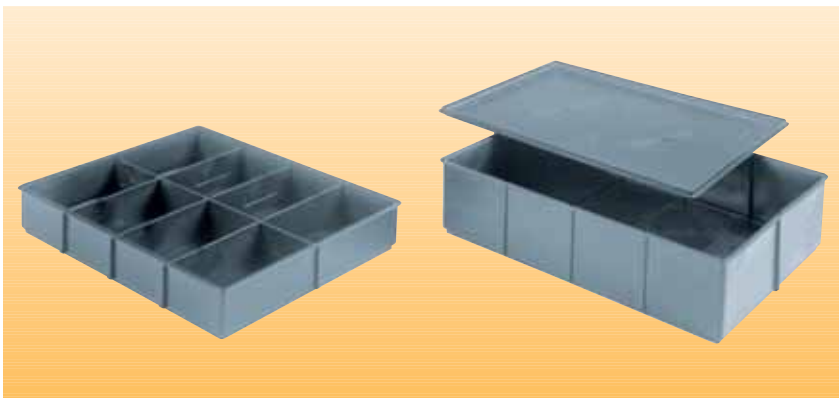
Efficient and flexible product protection during any kind of transports. Container and lid guarantee the perfect skin with logistic dimensions. The velcro strap holds your products secure in their position. Please ask for detailed information!



# Boxes with lids, small containers



*Boxes with film hinge lids are ideal for storing and mailing small quantities or articles. Lid and box in one piece, with film hinge and snap-lock. Size 1308 with integrated document holder in the lid. Made of PPC, grey.*



*Practical stackable box with lid and optional partition. Fits paper size A4. Available in 2 different heights. Made of PPC, grey.*



*wez LogiLine containers in miniature version (scale 1:5), stackable. Made of PPC, black.*

| Order No.    | Designation     | Overall dim. mm   | Inside dim. mm    | Colour |
|--------------|-----------------|-------------------|-------------------|--------|
| 1308.014.971 | Box with lid    | 136 x 087 x 019   | 130 x 080 x 014   | grey   |
| 1308.030.971 | Box with lid    | 136 x 087 x 035   | 130 x 080 x 035   | grey   |
| 1308.050.971 | Box with lid    | 136 x 087 x 055   | 130 x 080 x 050   | grey   |
| 1814.080.971 | Box with lid    | 180 x 140 x 080   | 178 x 133 x 078   | grey   |
| 2212.060.971 | Box with lid    | 225 x 125 x 060   | 221 x 121 x 055   | grey   |
| 0806.026.971 | Mini-container  | 080 x 060 x 026.6 | 072 x 052 x 025.4 | black  |
| 1208.026.971 | Mini-container  | 120 x 080 x 026.6 | 112 x 072 x 025.4 | black  |
| 1208.053.971 | Mini-container  | 120 x 080 x 053.2 | 112 x 072 x 052   | black  |
| 3325.050.971 | Stacking box    | 328 x 248 x 050   | 316 x 236 x 042   | grey   |
| 3325.080.971 | Stacking box    | 328 x 248 x 080   | 316 x 236 x 072   | grey   |
| 3325.000.971 | Lid             | 328 x 248         |                   | grey   |
| 3004.002.971 | Long partition  | 322 x 039         |                   | grey   |
| 2004.002.971 | Short partition | 242 x 039         |                   | grey   |



# Stacking and transport accessories



*Trolley No. 1 Galvanised metal.*  
Size 600 x 400 mm, with 4 plastic casters  
75 mm dia. Max. load 300 kg  
Order No. 60.6400.001.001



*Plastic trolley, red*  
Size 600 x 400 mm, with 4 plastic casters  
100 mm dia. Max. load 250 kg  
Order No. 60.6400.004.000



*Alu trolley with edge profiles made of plastics.*  
Size: 800 x 600 mm, 4 casters 100 mm dia.  
Max. load 250 kg  
Order No. 60.8600.004.000



*Trolley No. 2 with pushing handle. Otherwise as No. 1.*  
Order No. 60.6400.002.002



*Extension frame for container, 44 mm high.*  
Order No. 4304.700.971, 400 x 300 mm  
Order No. 6404.700.971, 600 x 400 mm



*Additional handle grip for easier handling of containers with heavy loads.*  
Plugs onto container with shell grips.  
Order No. 63.9980.014.990



*Safety corner for stacking pallets with frames.*  
Suitable both for wooden and plastic pallet frames.  
Order No. 9980.023.000 yellow  
Order No. 9980.024.000 grey



# Labelling systems



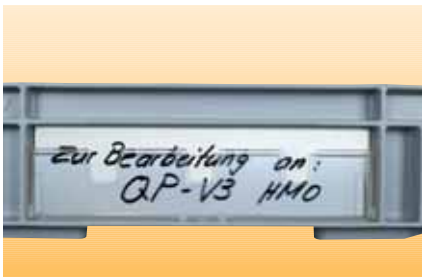
Label clip, rivetable, holds documents in place.  
Order No. 9980.001.000 riveted  
Order No. 9980.002.000 loose



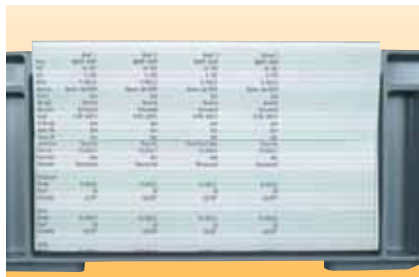
Label clip, plug-on, holds documents in place.  
Order No. 9980.004.000 plugged-on  
Order No. 9980.005.000 loose



Label pocket H90, transparent, height 90 mm, document width 210 mm. Fixed to container with U-Clips.  
Order No. 9980.045.000 mounted  
Order No. 9980.046.000 loose



Label pocket H44, transparent, height 44 mm, document width 210 mm. With adhesive tape.  
Order No. 9980.086.000 mounted  
Order No. 9980.085.000 loose



Label pocket Mopac, transparent. Height 70 mm, document width 210 mm. With adhesive tape.  
Order No. 9980.821.000 mounted  
Order No. 9980.121.000 loose



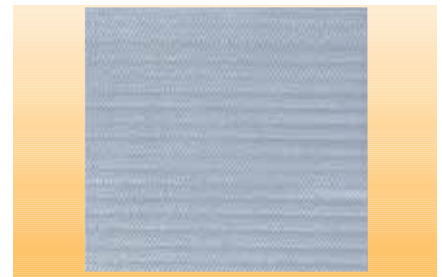
Flexible label pockets, transparent. With adhesive tape. 2 sizes  
115 x 156 mm: 60.9980.X39.000  
083 x 115 mm: 60.9980.X50.000



Hinged lid with document pocket inside.  
Size A4  
4300.932.971, lid size 400 x 300 mm  
6400.932.971, lid size 600 x 400 mm



Rough foil, self-adhesive for easy removal of adhesive labels.  
Size: 180 x 120 mm  
Order No. 60.9980.178.000



Rough surface for easy removal of adhesive labels. Printed on container or lid.  
Sizes: 130 x 73 mm / 100 x 55 mm / 40 x 30 mm



Bar code labels  
also with integrated RFID-technology. According to customer specification.

# Individual logo positioning, printing and numbering



We can print any desired logo on your containers by hot stamping, monochrome or multi-colour, 1- to 4-sided. For advertising, logistics purposes and/or protection against theft. Options: standard lettering 1, 2, 3 or 4 cm high. Company logo based on your original. numbering (sequential if desired) in standard figures 1, 2 or 3 cm high.



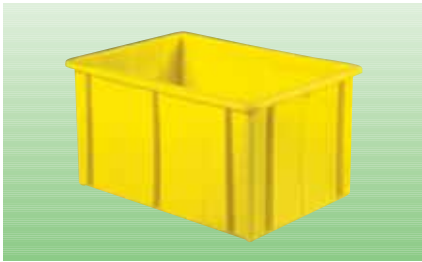
| Order No.    | Designation       | Colour     |
|--------------|-------------------|------------|
| 9981.000.001 | 1-sided lettering | monochrome |
| 9981.000.002 | 2-sided lettering | monochrome |
| 9981.000.004 | 4-sided lettering | monochrome |
| 9981.001.001 | 1-sided numbering | monochrome |
| 9981.001.002 | 2-sided numbering | monochrome |
| 9981.001.004 | 4-sided numbering | monochrome |

for multicolour printing please contact us!

Subject to changes!

| Prägefalten/Printing-Colour          |  | Ausgabe/Edition 2007                                       |  |
|--------------------------------------|--|--|--|
| <b>Email glanz<br/>enamel glossy</b> |  | <b>Metall hochglanz<br/>metal high-gloss</b>               |  |
| 70 red                               |  | 26 green   |  |
| 72 red                               |  | 29 blue  |  |
| 74 orange                            |  | 30 red   |  |
| 76 yellow                            |  |  |  |
| 77 yellow                            |  | <b>Gold- und Silberimitation<br/>gold-silver-imitation</b> |  |
| 78 green                             |  | 10 gold  |  |
| 83 blue                              |  | 20 silver  |  |
| 84 dark blue                         |  |  |  |
| 85 magenta                           |  | <b>Matt<br/>dull finish</b>                                |  |
| 97 dark grey                         |  | 54 blue  |  |
| 98 black                             |  | 69 white   |  |
| 99 white                             |  | P912 black   |  |

# Products for special applications



*Plasticaisse, stackable container, ideal for vintage, in 2 heights. Made of PP.*



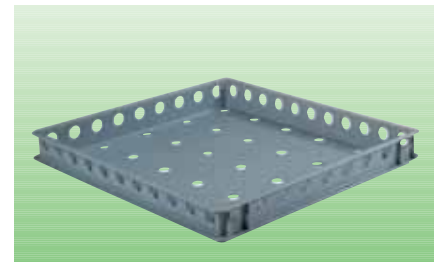
*LG-container, stackable in 2 heights. Made of PP, grey.*



*Multipurpose tray, useful oil or dirt catcher, or as shoe tray. Made of PP, grey.*



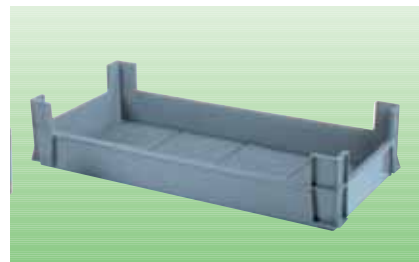
*Gastro-standard container, slide-in design for gastro-standard racks. Closed version, PP, grey.*



*Gastro-standard container, stackable, perforated version, PP, grey.*



*Germination tray, stackable. Suitable for potting machines. Made of PP, grey.*



*Germination tray, stackable, perforated bottom. Made of PP, grey.*

| Order No.    | Designaton                       | Ov. dim. mm     | Inside dim. mm    | Colours                   |
|--------------|----------------------------------|-----------------|-------------------|---------------------------|
| 5034.140.9XX | Plasticaisse                     | 500 x 340 x 140 | 460 x 298 x 135   | 911 = yellow/921 = orange |
| 5034.250.9XX | Plasticaisse                     | 500 x 340 x 250 | 460 x 298 x 245   | 911 = yellow/921 = orange |
| 5033.098.971 | LG-container                     | 500 x 330 x 098 | 470 x 300 x 080.5 | grey                      |
| 5033.140.971 | LG-container                     | 500 x 330 x 140 | 470 x 300 x 122.5 | grey                      |
| 6448.030.971 | Multipurpose tray                | 645 x 485 x 030 |                   | grey                      |
| 6553.069.971 | Gastro-standard cont. closed     | 650 x 530 x 069 | 607 x 487 x 062   | grey                      |
| 6553.969.971 | Gastro-standard cont. perforated | 650 x 530 x 069 | 607 x 487 x 062   | grey                      |
| 6035.130.972 | Germination tray open            | 602 x 348 x 130 | 575 x 320         | grey                      |
| 3460.130.972 | Germination tray                 | 600 x 345 x 130 | 570 x 310         | grey                      |



# Waste and paper bins



Paper bin 15 litres  
 Dimensions: Ø 250 x 400 mm  
 Colour: black  
 Order No. 55.0540.015.391



Waste butt 36 litres  
 Dimensions: Ø 330 x 500 mm  
 Colour: white  
 Order No. 55.0615.036.943  
Lid closed version, red  
 Order No. 55.0615.200.331  
Lid open version, red  
 Order No. 55.0615.100.331



Waste bin 40 litres  
 Dimensions: 235 x 330 x 530 mm  
 Colour: black  
 Order No. 55.0540.040.090

# Buckets, sturdy and strong



Bucket 6 and 18 litres  
 made of PP, with litre indication  
 and plastic-gripped metal handle



Bucket 12 litres, rectangular  
 made of PP, with litre indication  
 and plastic-gripped metal handle



Bucket 15 litres  
 made of PP, with litre indication  
 and plastic-gripped metal handle

| Order No.       | Capacity l | Dimensions           | Colours             |
|-----------------|------------|----------------------|---------------------|
| 50.0520.006.935 | 6          | Ø 260 x 200 mm       | red                 |
| 50.0520.018.9XX | 18         | Ø 330 x 350 mm       | red, white (nature) |
| 50.0525.012.9XX | 12         | □ 260 x 300 x 250 mm | red, blue           |
| 50.0509.015.935 | 15         | Ø 320 x 280 mm       | red                 |



# Plastic injection moulding: our key strength.

Since 1956 we have been producing injection moulded thermoplastic components from 6 g to 6 kg in weight at our Oberentfelden manufacturing plant in the Aargau region of Switzerland. We are one of Switzerland's largest processors of plastics, with three main product ranges:

**wez LogiLine:** the comprehensive range of containers and accessories for all logistics requirements.

**wez Blackline:** a full range of antistatic plastic containers, racks and packagings for the protection of electronic components.

**wez Crealine:** development and production of high-grade thermoplastic components and assemblies.

## Product development and toolmaking

Combining advanced tools like 2D and 3D CAD facilities with the creativity of our development specialists, designers and plastics engineers, guarantees innovative customer oriented solutions in toolmaking and product development.



## Production

We have more than 30 computerised injection moulding machines running on a 3-shift production basis, producing components and assemblies for worldwide customers. Our modern manufacturing operation includes all the necessary peripheral equipment for stamping, ultrasonic and reflector welding and other assembly operations.

wez processes all commercial plastic types (with the exception of PVC). Trucks deliver the main material batches straight to silos which are linked directly to our production equipment.



## Quality

The product and service quality on which our customers rely is guaranteed by daily implementation of our EN/ISO 9001:2000 certified quality assurance system – from design through to production and sales.

## Warehousing and despatch

Our large warehousing facilities ensure fast delivery of our comprehensive product range to all five continents.

You are welcome to pay us a visit. We look forward to showing you how we could work together to create a successful partnership.





wez Kunststoffwerk AG  
Postfach  
CH-5036 Oberentfelden  
Tel. +41 (0)62 737 88 00  
Fax +41 (0)62 737 88 10  
info@wez.ch  
www.wez.ch